



**EMLV**  
École de Management  
Léonard de Vinci

Pôle Universitaire  
Léonard de Vinci

“  
Today's learning  
for tomorrow's  
entrepreneurship  
”

**EMLV**  
LÉONARD  
DE VINCI

[www.emlv.fr](http://www.emlv.fr)

# EMLV École de Management Léonard de Vinci

(State approved diploma)

Business is changing, the economy is globalising, jobs are becoming more technical and managers have to confront ever stronger demands in order to remain competitive against a constantly changing background.

To respond to these changes, the **Ecole de Management Léonard de Vinci** offers young school leavers an innovative training which is in phase with the expectations of the business world. Its curriculum, based on the European 3/5/8 model, trains young managers to be operational, creative and competitive in the job market thanks to **an educational programme built around three main emphases:**

- Training graduates to take up a position within companies, thanks to their mastery of management and sales techniques.
- Developing the potential and talents of each individual; the pedagogy implemented by the EMLV places the focus on personal development, initiative and entrepreneurship.
- Thriving in sports, cultural activities and associations .

## Professional training across 2 cycles

**1st cycle Degree (3 years):** Definition of a professional project on the basis of various basic courses in management and business. Discovery of the business world (internships in the first and third years). Personal development techniques.

**2nd cycle Master (2 years):** Professional specialisation and professional integration.

Specialised masters in partnership with the **CERAM**: MSc International Project Management, MSc Financial Markets & Compliance - with **Dauphine**: Master 2 Pro Management of New Communication Media and Tourism - with **London Southbank University**: International Business and Management of European Affairs.

## A 3rd year dedicated to travel abroad

Because the future is increasingly to be found on the international stage, EMLV students must all spend a minimum of one semester abroad, in a company or in a partner university, and all of their third year teaching is conducted exclusively in English with native English-speaking teachers.

Possibility of a double degree with our partner universities in 23 countries.

## Graduates who are immediately operational:

Average time before finding the 1st job: 3 months

### Sectors of activity:

Trade / Distribution: 13% • NIT: 18% • Banks / Insurance: 11% • Consulting / Auditing: 15% • Communication / Events: 9% • Other sectors: 34%

## ●●● The EMLV also offers a specific programme for athletes

The EMLV offers a unique and tailor-made programme, drawn up in partnership with the INSEP, which allows student athletes to combine training in their sporting discipline with education at the school. More than 100 student athletes, among whom some international champions (karate, athletics, gymnastics...) follow the EMLV courses and receive personalised assistance.



## PÔLE UNIVERSITAIRE LÉONARD DE VINCI

A true university campus at the heart of Paris-La Défense

The Pôle Universitaire Léonard de Vinci, located at the very heart of the Défense business district, hosts almost 5,000 students and includes the three Léonard de Vinci higher education institutions, a continuing education institute, a training centre for apprentices as well as a number of other establishments and partner schools.

Set close to the headquarters of some of the major international companies, the courses provided by The Pôle Universitaire Léonard de Vinci are constantly driven by contact with the business world. The Pôle Universitaire Léonard de Vinci offers an exceptional working environment:

- A unique location, 10 minutes by subway from the Place de l'Étoile;
- Equipment at the cutting edge of technology: computer network with more than 1,200 workstations, high-speed Internet access, Wi-Fi, fully equipped lecture halls and classrooms, research laboratories, etc...
- One of the largest information libraries in Europe in Management Sciences, with computerised access to the world's most important information databases;
- A language resource centre with three multimedia laboratories;
- Areas for interaction and exchanges between students and their many associations;
- Five sports halls with the very latest equipment.

### Contacts :

Pôle Universitaire Léonard de Vinci  
92916 Paris-La Défense Cedex  
Tél. : +33 1 41 16 76 97  
Fax : +33 1 41 16 71 02

[contact@devinci.fr](mailto:contact@devinci.fr)

[www.emlv.fr](http://www.emlv.fr)

[www.devinci.fr](http://www.devinci.fr)





**ESILV**  
**École Supérieure d'Ingénieurs**  
**Léonard de Vinci**  
authorised to confer the title of «ingénieur»

**Pôle Universitaire**  
**Léonard de Vinci**



At the cutting edge of **new technologies**  
to meet the needs of **the business**  
**world...**



# ESILV École Supérieure d'Ingénieurs Léonard de Vinci

(authorised to confer the title of «ingénieur»)

Even regardless of the current economic context, the shortage of engineers has become overwhelming and therefore there is a huge world-wide demand for engineering graduates.

## Training in direct contact with companies

The ESILV curriculum is constantly adapted to meet the needs expressed by companies. The permanent contact with professionals, hands-on industrial projects throughout the curriculum, three long internships and numerous smaller missions within companies enable students to come face-to-face with the reality of being an engineer and to acquire substantial professional experience while they are studying.

## Research and Pedagogy: an effective and dynamic synergy

The educational orientations of the ESILV are regularly appraised by the Campus Scientific Board and the ESILV School Board. Four Departments of Education and Research are responsible for the School's specialist options. In addition to their activities which give rise to research contracts and industrial production contracts, they have links with other renowned research centres: CNRS, ENSAM, INRIA, PSA, SAGEM, EADS.....

## General Training and Specialisation

### A preparatory cycle of 2 years (1st and 2nd year of graduate training):

Enhanced initial training to students, providing all of the theoretical and technical fundamentals (mathematics, mechanics, physics, computer studies...) adapted to help them pursue their engineering studies. This cycle ends with an internship.

**An Engineering cycle of 3 years (3rd, 4th and 5th year of graduate study):** After having acquired the fundamentals of engineering over one year, the student chooses a speciality from among **four options: Scientific Computing, Information Engineering, Financial Engineering, Systems Mechanics.**

During these five years of teaching, our students have access to high-tech equipment: 9 experimental rooms, 2 machining (conventional and digital) and formatting platforms (plastic injection).

## Transversal teaching

Lessons which are not specifically for engineering, in collaboration with the other schools on the campus, allow students to acquire knowledge that is useful for business managers, such as law, management, English (obligatory), oral expression, teamwork etc. These courses are enriched by a wide-ranging international exchange programme (United States, Canada, China, Eastern Europe, etc.).

**Very fast access to employment:** over 90% of graduates find employment within an average of less than one month.

## ● ● ● The ESILV also offers four Scientific Masters:

After 5 years of graduate study, these courses provide graduates with additional high-level specialisation.

- **MS Analysis and Control of Financial Risks**
- **MS Intelligent Engineering and Optimised System Design**
- **MS Advanced Scientific Computing**
- **MS Information Engineering.**



## PÔLE UNIVERSITAIRE LÉONARD DE VINCI

A true university campus at the heart of Paris-La Défense

The Pôle Universitaire Léonard de Vinci, located at the very heart of the Défense business district, hosts almost 5,000 students and includes the three Léonard de Vinci higher education institutions, a continuing education institute, a training centre for apprentices as well as a number of other establishments and partner schools.

Set close to the headquarters of some of the major international companies, the courses provided by The Pôle Universitaire Léonard de Vinci are constantly driven by contact with the business world. The Pôle Universitaire Léonard de Vinci offers an exceptional working environment:

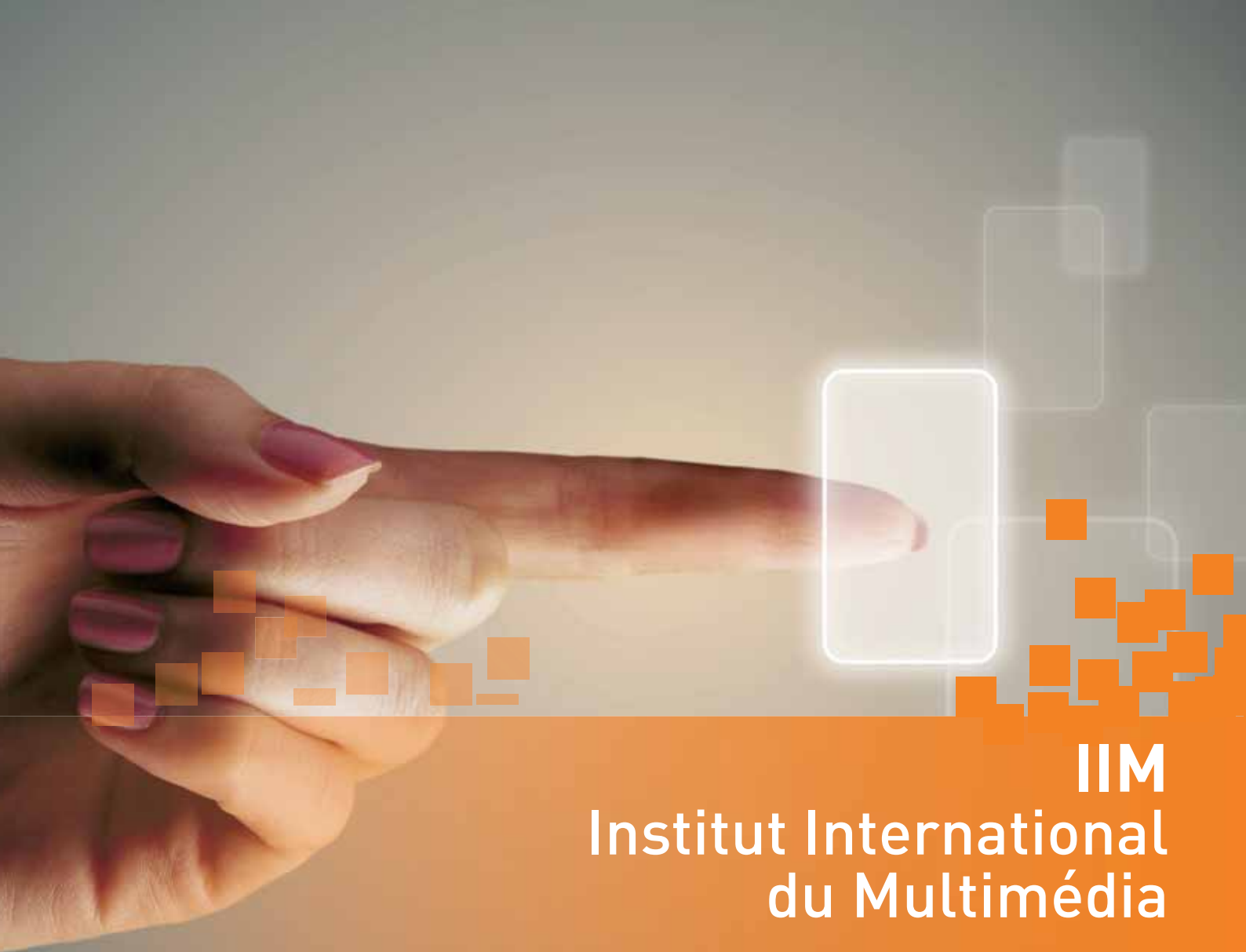
- A unique location, 10 minutes by subway from the Place de l'Étoile;
- Equipment at the cutting edge of technology: computer network with more than 1,200 workstations, high-speed Internet access, Wi-Fi, fully equipped lecture halls and classrooms, research laboratories, etc...
- One of the largest information libraries in Europe in Management Sciences, with computerised access to the world's most important information databases;
- A language resource centre with three multimedia laboratories;
- Areas for interaction and exchanges between students and their many associations;
- Five sports halls with the very latest equipment.

### Contacts :

Pôle Universitaire Léonard de Vinci  
92916 Paris-La Défense Cedex  
Tél. : +33 1 41 16 76 97  
Fax : +33 1 41 16 71 02

[contact@devinci.fr](mailto:contact@devinci.fr)  
[www.esilv.fr](http://www.esilv.fr)  
[www.devinci.fr](http://www.devinci.fr)





**IIM**  
Institut International  
du Multimédia

Pôle Universitaire  
Léonard de Vinci

“ Innovative training  
at the heart of a strategic  
business sector ”



[www.iim.fr](http://www.iim.fr)

# IIM Institut International du Multimédia

New information and communication technologies are now an integral part of our society. Multimedia is everywhere: Internet, services for mobile phones, computer graphics and special effects, DVD, video games on consoles and in networks, interactive television, etc.

The Institut International du Multimédia is a «forerunner» in this strategic sector for companies which use these technologies every day for internal and external communication, to promote and sell their products, to maintain good customer relations, etc.

## IIM Multimedia Course:

We train **Multimedia Project Managers** over 5 years, able to design and monitor the use of these new technologies. (Professional title certified by the State)

Preparatory cycle: Acquisition of the culture and technical fundamentals of multimedia

**Year 2:** technical skills enhancement, web design, design, 3D graphics, etc.

**Year 3:** Project management: production management, applications on real projects as a project manager (project fair), etc.

**Year 4:** NIT-oriented marketing, e-marketing, market research, CRM, business case studies, six-month internship as an assistant project manager, etc.

**Year 5:** NIT-oriented management, strategic marketing, business cases, six-month internship as project manager, the objective being to move into a job at the end of the internship.

English is taught throughout the programme, whichever course is chosen.

## Acknowledged skills, jobs on graduation:

Over 80% of IIM students are hired as soon as they graduate  
15% of graduates start their own business.

## ●●● Specialist MBA in Video Game Management

*Digital Entertainment Marketing and Management*

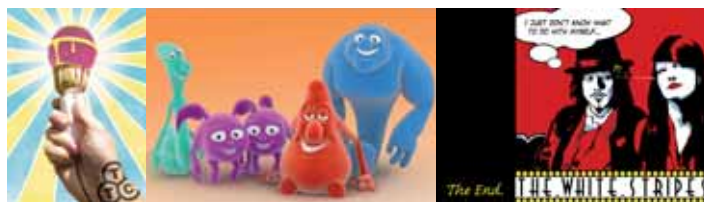
The objective of this MBA, created by the IIM to respond to demand from companies in the sector, some of which are major international firms, is to train video game production managers (a market which is bigger than the film industry), project managers, editorial directors and videogame product managers.

## IIM Communication Course:

5 years to train **Communication Managers** in agencies and with advertisers.

**Years 1 and 2** are similar to those in the Multimedia Course, with a greater focus on the acquisition of a multichannel multimedia culture, advertising basics and the mechanisms and principles of communication, etc.

**Years 3, 4 and 5:** The main issues in Management and Marketing are maintained, focusing exclusively on corporate communication: techniques, multichannel strategy, communication and editorial productions, etc., with each of the last two years of the course including an internship of at least 6 months.



## PÔLE UNIVERSITAIRE LÉONARD DE VINCI

A true university campus at the heart of Paris-La Défense

The Pôle Universitaire Léonard de Vinci, located at the very heart of the Défense business district, hosts almost 5,000 students and includes the three Léonard de Vinci higher education institutions, a continuing education institute, a training centre for apprentices as well as a number of other establishments and partner schools.

Set close to the headquarters of some of the major international companies, the courses provided by The Pôle Universitaire Léonard de Vinci are constantly driven by contact with the business world. The Pôle Universitaire Léonard de Vinci offers an exceptional working environment:

- A unique location, 10 minutes by subway from the Place de l'Étoile;
- Equipment at the cutting edge of technology: computer network with more than 1,200 workstations, high-speed Internet access, Wi-Fi, fully equipped lecture halls and classrooms, research laboratories, etc...
- One of the largest information libraries in Europe in Management Sciences, with computerised access to the world's most important information databases;
- A language resource centre with three multimedia laboratories;
- Areas for interaction and exchanges between students and their many associations;
- Five sports halls with the very latest equipment.

### Contacts :

Pôle Universitaire Léonard de Vinci

92916 Paris-La Défense Cedex

Tél. : +33 1 41 16 76 97

Fax : +33 1 41 16 71 02

[contact@devinci.fr](mailto:contact@devinci.fr)

[www.iim.fr](http://www.iim.fr)

[www.devinci.fr](http://www.devinci.fr)

